



**Jiangsu Jingfu Industrial Technology Co., Ltd.**  
Building 1-2, No. 83 Weier Road, Chengbei Zone,  
Jingjiang, Jiangsu, China

**Shandong Jingfu Laser Technology Co., Ltd.**  
Address:F1,B Area, Zhigu, Liancheng, Qihe County,  
Dezhou, Shandong Province, China

**Wuhan OEM Laser Technology Co., Ltd.**  
Address:2nd Floor, No.9 Building, chuangzhi Jidi, Donghu,  
No.60 jujukang Dadao Rd.,Caidian District,Wuhan,Hubei,china

**Jingfu Industrial Technology Hebei Co., Ltd.**  
Address: Shi Zhuangzi Village, Jinniu Town, Qing County,  
Cangzhou, Hebei,China

**Foshan Jingfu Laser Technology Co., Ltd.**  
Building 4-1101 Liandong U gu, No.39 Juyuan North Road,  
Guicheng street, Foshan, Guangdong,China.



# JINGFU LASER

**JINGFU LASER**

RESEARCH/DEVELOPMENT/PRODUCTION/SALES



# GLOBAL ENTERPRISE

# About us

Jiangsu Jingfu Industrial Technology Co., Ltd. is a company engaged in the research, development, production, and sales of laser welding technology, with a focus on the application of laser welding. The company has achieved key technological innovations in the field of laser welding and has made rapid breakthroughs in laser handheld welding machines, robotic automatic welding machines, and other areas. It offers a range of intelligent laser welding equipment, including kilowatt-class handheld laser welding equipment.

The company's product line includes laser handheld welding machines, laser

handheld cleaning machines, laser platform automatic welding machines, pulse laser cleaning machines, and robotic automatic welding machines.

The company adheres to the principle of integrity in its operations and brings together industry experts. It maintains efficient operations in product research and development, design, manufacturing, quality control, and service coordination. The company is dedicated to providing high-quality equipment and comprehensive services to new and existing customers, offering free technical guidance and staff training.

## JINGFU Water Cooling Laser Welding Machine



## JINGFU Water Cooling Laser Welding Machine



Model	JF-W1200	JF-W1500	JF-W2000	JF-W3000
Output Power	1200W	1500W	2000W	3000W
Emission Wavelength(nm)	1080±5	1080±5	1080±5	1080±5
Operation Modes	CW/Modulated	CW/Modulated	CW/Modulated	CW/Modulated
Recommended Thickness	0.4-4mm	0.4-4.5mm	0.4-5.5mm	0.4-8mm
Welded Seam Specification	≤0.5mm	≤0.5mm	≤0.5mm	≤0.5mm
Cooling Method	Water Cooled	Water Cooled	Water Cooled	Water Cooled

Model	JF-W1200S	JF-W1500S	JF-W2000S	JF-W3000S
Output Power	1200W	1500W	2000W	3000W
Emission Wavelength(nm)	1080±5	1080±5	1080±5	1080±5
Operation Modes	CW/Modulated	CW/Modulated	CW/Modulated	CW/Modulated
Recommended Thickness	0.4-4mm	0.4-4.5mm	0.4-5.5mm	0.4-8mm
Welded Seam Specification	≤0.5mm	≤0.5mm	≤0.5mm	≤0.5mm
Cooling Method	Water Cooled	Water Cooled	Water Cooled	Water Cooled

## JINGFU Air cooled Laser Cleaning Machine



Model	JF-CA07	JF-CA12	JF-CA20
Working voltage (V)	1ph AC220V±5%		
Frequency (Hz)	50/60		
Power (W)	700	1200	2000
Fiber length(m)	10	10	10
Laser output head	QBH		
Central wavelength (nm)	1070±5	1070±5	1070±5
Operating temperature range (°C)	-20~+40		
Humidity	≤70% at 40°C; ≤90% at 20°C		
Shield gas	Argon, Nitrogen		
Rusting cleaning wide (mm)*	≤30mm	≤30mm	≤30mm

## JINGFU Air cooled Laser Welding Machine



Model	JF-A07	JF-A12	JF-A15	JF-A20
Output Power	700W	1200W	1500W	2000W
Emission Wavelength(nm)	1080±5	1080±5	1080±5	1080±5
Operation Modes	CW/Modulated /Pulse	CW/Modulated /Pulse	CW/Modulated /Pulse	CW/Modulated /Pulse
Recommended Thickness	0.4-2.5mm	0.4-4.0mm	0.4-5mm	0.4-6mm
Welded Seam Specification	≤0.5mm	≤0.5mm	≤0.5mm	≤0.5mm
Cooling Method	Air Cooled	Air Cooled	Air Cooled	Air Cooled

## JINGFU Laser Cleaning Machine



Model	JF-CW1500	JF-CW2000	JF-CW3000
Working voltage (V)	1ph AC220V±5%		3ph 380V ±10%
Frequency (Hz)	50/60		
Power (W)	1500	2000	3000
Fiber length(m)	10	10	10
Laser output head	QBH	QBH	QBH
Central wavelength (nm)	1080±5	1080±5	1080±5
Tank Capacity	10	10	16
Rusting cleaning wide (mm)*	≤30mm	≤30mm	≤30mm

## JINGFU Pulse Laser Cleaning Machine



Model	JF-C01	JF-C02	JF-C03	JF-C05
Application	Remove surface oil stains, rust spots, scale, weld cleaning, organic coating, surface roughening, etc.			
Output Power (W)	100	200	300	500
Emission Wavelength(nm)	1060-1070			
Fiber Length (M)	5M			10M
Operation Modes	Pulse			
Working Voltage	AC220V.50Hz/60Hz			
Rated Output Power Suply(KW)	1.2			2.5
Cooling Method	air-cooled			water cooled
Scanning Width (mm)	0.1-130			
Scaning Pattern	8			
Laser Device Type	Fiber/Pulse			
Equipment Dimension	510*380*680		customized	
Equipment Weight (Kg)	35/30/30/customized			

# COLLABORATIVE ROBOT LASER WELDING MACHINE

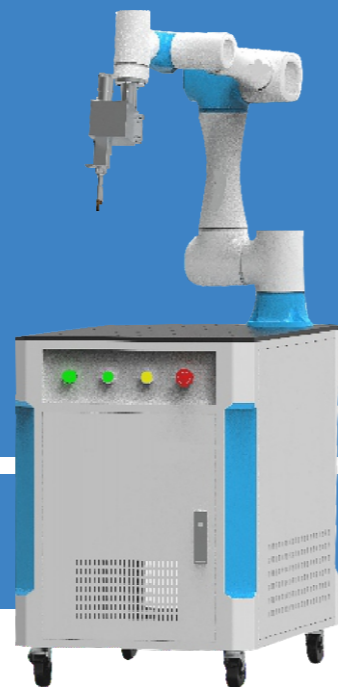
Filling method: Filling wire, not filling wire

Wire diameter :Φp0.8-p2.0mm

Welding width:

Weld effect:

Welding speed: traditional



## Equipment characteristics

**Simple and easy to use:** support sensitive finger movement teaching, Chinese direct teaching compilation and interpretation, no professional connection and compilation knowledge, true meaning zero screen shameacement

**Flexible collaboration:** integrated controlless constant design, system reduction by 50%, to achieve visual pin deployment applications, with a number of safety functions Yes, it's safer for people to work together

**High quality and high efficiency:** High repeated positioning accuracy. Ensure the robot welding speed, good quality, beauty, avoid secondary processing Fast production change: suitable for small batch multi-variety parts production, can quickly achieve production switching

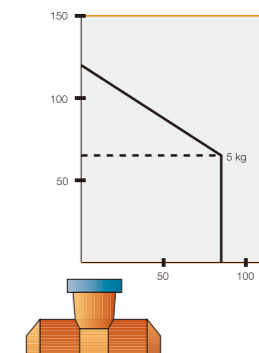
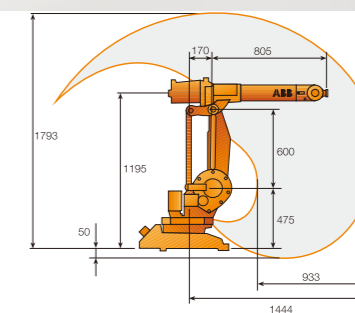
Equipment model	QM-X1500	QM-X2000	QM-X3000
Laser power	1500W	2000W	3000W
Laser brand	BWT, BEIJING RECI		
Laser type	FIBER		
Fiber Length	1080±3mm		
Power adjustable	10-100%		
Type of cooling	Water cooling		
Equipment power supply	1ph AC220V		3ph 380V
Overall power consumption	≤10KW	≤12KW	≤14KW
			≤18KW
			≤25KW

# JINGFU Industrial robot laser welding machine

## IRB 1410



Load-bearing capacity	5KG
additional load	
Axis 3	18KG
Axis 1	19KG
No. of axis	
Robot body	6
external equipment	6
integrated signal source	Upper arm 12 signal
Integrated air source	Highest upper arm 8 bar
Working voltage	200-600V
Frequency	50/60HZ
Rated power	
Transformer rating	4KVA/7.8KVA,including outer shaft
Repeated positioning accuracy	0.05mm
Run	IRB 1410
TCP maximum speed	2.1m/s
Continuous rotating box	6
Environment Temperature	5-45°C
Humidity	< 95%
Degree of protection	electrical equipment IP 54, Mechanical equipment needs a dry environment
Noise level	Highest 70dB(A)
radiation	EMV/EMI shield
Clean room	100 grade, United States federal standard 209e
Robot install	floor-type
Base Size	620*450mm
Weight	225KG



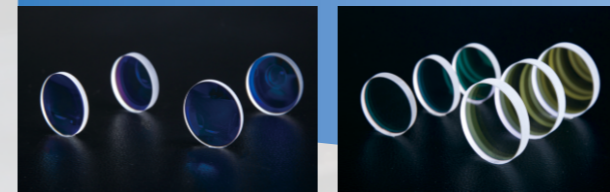
# JINGFU automatic laser welding machine platform



Model	JF-P-5A		
Platform Size(mm)	1000*880	1300*970	1650*1330
Module Stroke X/Y/Z Axis (C/A Axis Optional)	X500/Y300/Z300	X800/Y300/Z500	X1000/Y600/Z400
Working Voltage	AC220V±10% 50/60Hz		
Operation Mode	continuous/pluse		
Cooling Method	water cooling		
Welding Method	self-flux/filling wire		
Fiber Length (M)	10		
Emission Wavelength(nm)	1070		
Orientation Method	Red Light Indication、CCD Inspection		
Configuration	Laser Source, Chiller,Servo Motor,Industrial wavable Torch head,Control System,CCD Camera,PLC		

# ACCESSORY

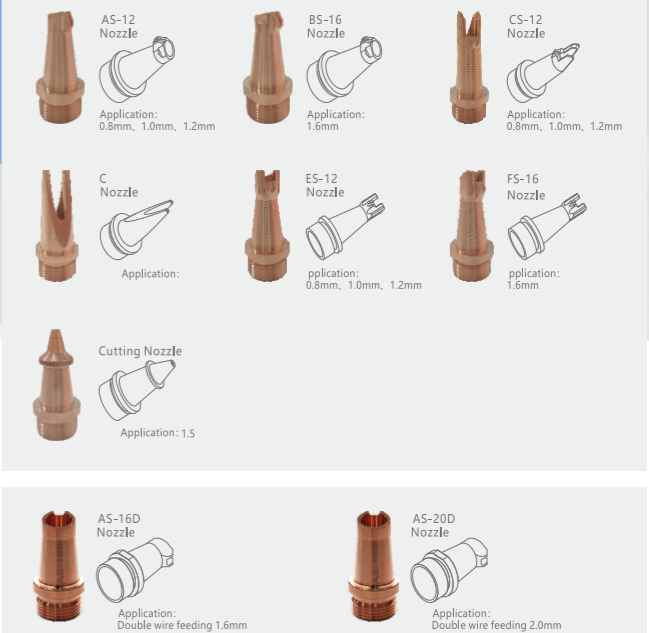
## Optical Lens



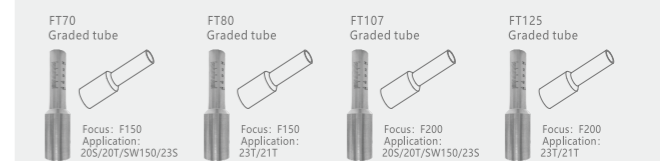
Applicable to our welding, cleaning products of focusing lens, collimating lens, reflective lens, and protective lens. Imported quartz crystal material, applicable for 1500-3000W, high temperature resistance, laser resistance, double anti-reflection film.

Name of lens	Specification	Applicable Products
Protective Lens	D18*2	20S/T, 21T, 23S/T, SW150
	D30*5	22C
Focusing Lens	D20*4.5-F150/F200	20S/T, 21T, 23S/T, SW150
	D20*3.5-F400/800	21C, 22C
Collimating Lens	D20-F60	20S/T, 21C
	D16-F60	21T, 22C, 23S/T, SW150
Reflective Lens	30*14*2	20S/T, 21T, 23S/T
	20*15.2*1.6	22C, SW150
	15.2*15.2*1.6	SW150

## Hand held welding nozzle and graded tube



## Handheld Welding Holster



# JINGFU

## Equipment Comparison

Handheld Laser Welding Machine  
Internal Angle Welding Effect

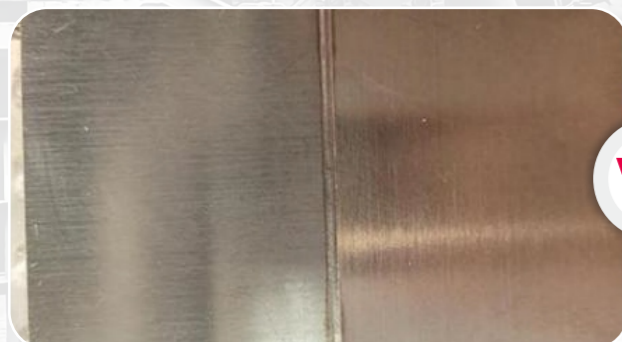


TIG Machine Internal Angle  
Welding Effect

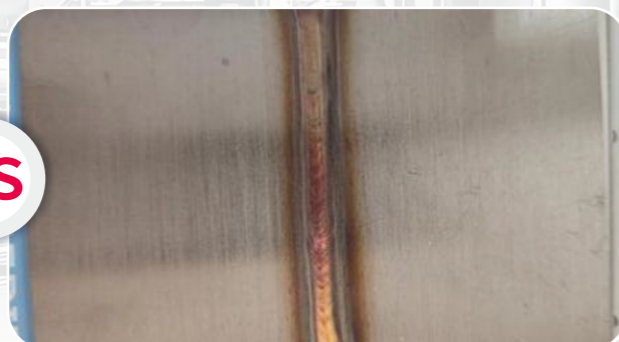


VS

Handheld Laser Welding Machine  
Side Welding Effect



TIG Machine Side Welding Effect



VS

Handheld Laser Welding Machine  
Outer Corner Welding Effect



TIG Machine Outer Corner  
Welding Effect



VS

# JINGFU

## Industrial Applications of Laser Welding Machines

The following are some examples of areas of use with laser welding machines

Aerospace Industry

Automotive Industry

Medical Device Manufacturers

Maintenance and Repairing Services

Electronics Manufacturing

Shipbuilding and Maritime Industry

Plumbing and Pipework

Automated Production Lines

Energy and Power Generation

Transportation Industry

Looking to save some money while upgrading your factory or workshop?

### Reduce Labor Costs

Say goodbye to the need of too many workers for cleaning tasks. Laser welding cleaning machines automate the process, save your money.

### Lower Consumable Expenses

Traditional cleaning methods can gobble up your budget with chemicals and replacement parts. Laser machines are more efficient and require fewer consumables.

### Versatility

These machines can clean various surfaces, from metals to delicate materials, making them ideal for a wide range of applications.

### Increased Productivity

Laser machines work lightning fast, boosting productivity. Finish tasks quicker than traditional ways.